

# CERTIFICATE OF LOCATION OF GOVERNMENT CORNER

NORTH QUARTER Corner of Section 18, Township 107 N, Range 39 W, 5<sup>th</sup> P.M.

STATE OF MINNESOTA, County of MURRAY

At the corner location shown on the sketch

- On \_\_\_\_\_ found a \_\_\_\_\_  
DATE
- left monument as found,  lowered monument,  removed monument (explain)
- On 10-9-91 placed a 3/4" x 24" REBAR WITH ALUMINUM CAP STAMPED  
DATE "DNR SURVEY MARKER", UP 0.1'

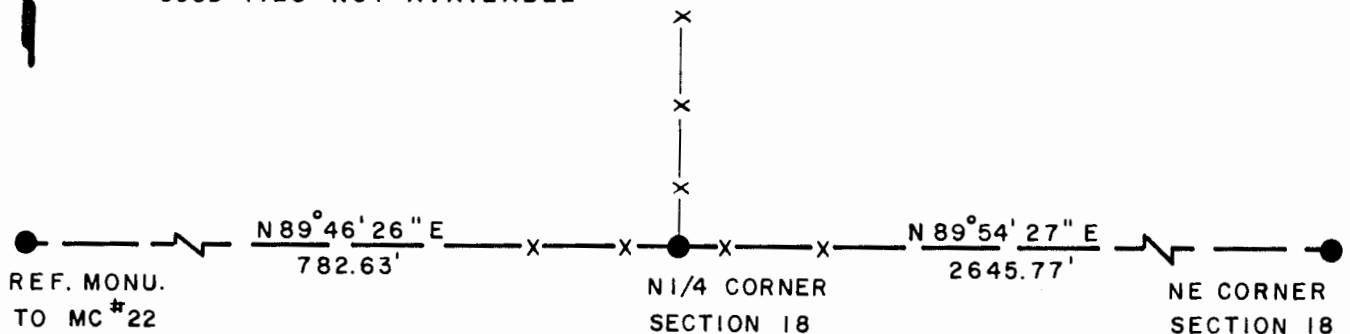
### SKETCH OF REFERENCE TIES



NOTE:

MONUMENT IS  
ON SOUTH SIDE OF CORNER  
FENCE POST (E-W-N)

GOOD TIES NOT AVAILABLE



1983 MURRAY COUNTY  
COORDINATE SYSTEM  
N = 184,627.172  
E = 550,876.374

BEARINGS ARE IN COUNTY ORIENTATION

Statement of evidence relative to this corner location is on back of page

J.B.M. 11-22-91  
WMA 00065.00.00.01

I hereby certify that this document and the data contained herein was prepared by me or under my direct supervision.

Bruce W. Husted 12-2-91  
SIGNATURE DATE

Registration No. 17003

- Land Surveyor,  Professional Engineer
- County Surveyor,  County Engineer

### OFFICE OF THE COUNTY RECORDER

County of MURRAY

I hereby certify that this document was filed in the Co. Recorder's office at \_\_\_\_\_ M. on the \_\_\_\_\_ day of \_\_\_\_\_ A.D., 19\_\_\_\_

County Recorder James V. Johnson

By DEC 4 1991, Deputy

DOCUMENT NO. \_\_\_\_\_

North Quarter Corner of Section 18, Township 107 North, Range 39 West

The DNR Bureau of Engineering contacted the following for survey information:

Minnesota Secretary of State's Office  
Murray County Recorder's Office  
Murray County Highway Engineer's Office

- 1861 U.S. General Land Office notes obtained from the Secretary of State's Office show the corner marked with pits and mound.
- 1907 Surveyor's Record Book A, page 205, obtained from the County Recorder's Office contains a survey by J. W. Woolstencraft. Survey shows a blue 10" by 10" by 22" boulder at corner but does not indicate if found or set. No distances are shown to corner. Woolstencraft notes that this corner is the government corner.
- 1991 October, DNR Bureau of Engineering found a corner fence post with fences east, west and north in area of corner. Probed and dug a 5 foot diameter area around corner fence post in search of record blue boulder. Only found small stones around the corner fence post. Set a DNR Survey Marker on the south side of the corner fence post and found it to be:  
2645.77 feet from the northeast corner of Section 18

Analysis of the above information led the DNR Bureau of Engineering to conclude that the DNR Survey Marker set next to the corner fence post with fences east, west and north marks the obliterated position of corner.